

## **Historic, Archive Document**

Do not assume content reflects current scientific knowledge, policies, or practices.



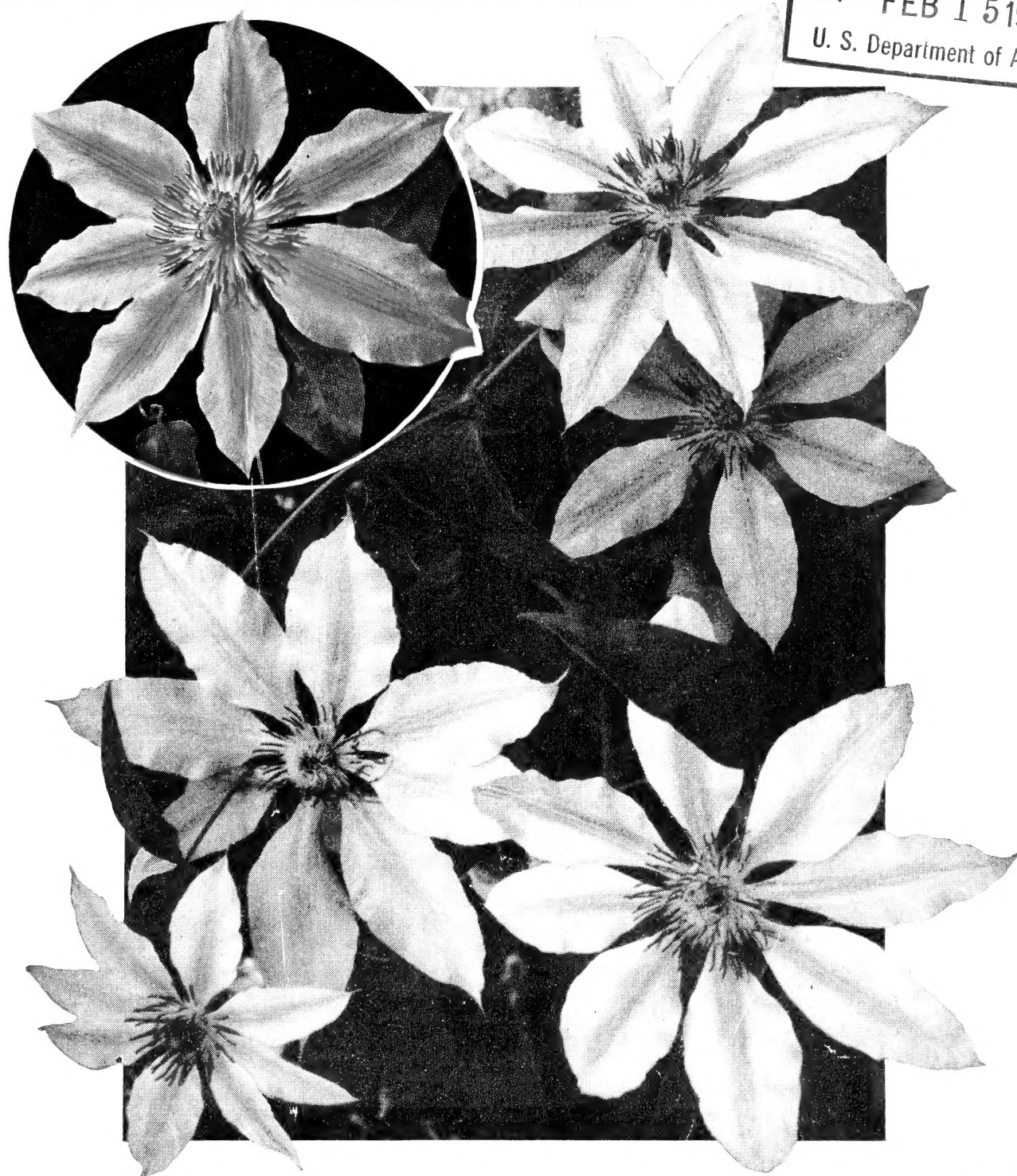
62.61

62

# CLEMATIS

Spring 1952 Edition

LIBRARY RECEIVED  
★ FEB 15 1952 ★  
U. S. Department of Agriculture



**Nelly Moser** Truly an unusual flower, profuse in bloom, vigorous in growth (10 to 12 ft.), this variety will bring new interest to the summer garden. Red bars accentuate the pale mauve and white petals. A fine cut flower.  
Each \$1.50

JAMES I. GEORGE & SON  
Fairport, New York

# James I. George & Son

## *Growers of America's Finest Clematis*

CLEMATIS are rapidly becoming one of the most popular of all vines and we have a collection of varieties and colors to suit any purpose. The hybrids with their platter-like flowers often measuring six to eight inches across the bloom are a joy wherever seen or grown. What the smaller flowered varieties lack in size of bloom, they more than make up with the quantity

of bloom. All the varieties listed are hardy in western New York State climate and are propagated and grown by us on their own roots.

Clematis make a fine display on arbors, trellises, old stumps, or grown and trained on cedar posts in the garden. Their use as summer cut flowers should not be overlooked.

### CULTURAL NOTES ON CLEMATIS

Select a location for Clematis which receives at least six hours of sunshine a day and see that the soil is a rich loose loam with good drainage. If the soil is not rich, it would pay to dig a good size hole, remove the soil and refill with a good loam. Provide a support for the plants to climb upon as Clematis do not like to have their tops and leaves on the ground but rather up into the air and light. A moist cool root-run for the summer months is well worth the trouble of mixing  $\frac{3}{4}$  peat moss and  $\frac{1}{4}$  Driconure to provide a mulch at least two inches deep and in a two-foot circle around the plant. A little Vigoro and lime

worked into the soil once or twice a season will supply the essential requirements. In extremely dry weather they should be watered from time to time. When cold weather arrives in the fall, safe winter protection can be easily accomplished by pulling soil up around the stems and covering with leaves, straw or other loose material. If height of vine is desired, little pruning, and only to remove the dead wood, in February or March, is enough, but generally Clematis make a better display if cut back to 18 inches above the ground in the very early spring before the new shoots have started.

**Please Read!** BEFORE ORDERING YOUR SELECTIONS

### HOW TO REMIT

You save money by sending your money order or check with the order.

We do not ship C.O.D. as the Post Office and Express Company charge extra for this service.

### SHIPPING

We ship in the spring about March 1st and continue until the planting season is over. Postage is paid by us anywhere in the U. S. A. on Clematis. The ornamental vines are postpaid if included with an order for Clematis, otherwise the order must amount to \$5.00 to have us pay the postage on them.

As far as possible, we supply Clematis with soil on their roots even though it may mean additional postage on the shipment.

**EACH YEAR WE SELL OUT COMPLETELY**  
We suggest that you get your order in as early as possible for early selection.



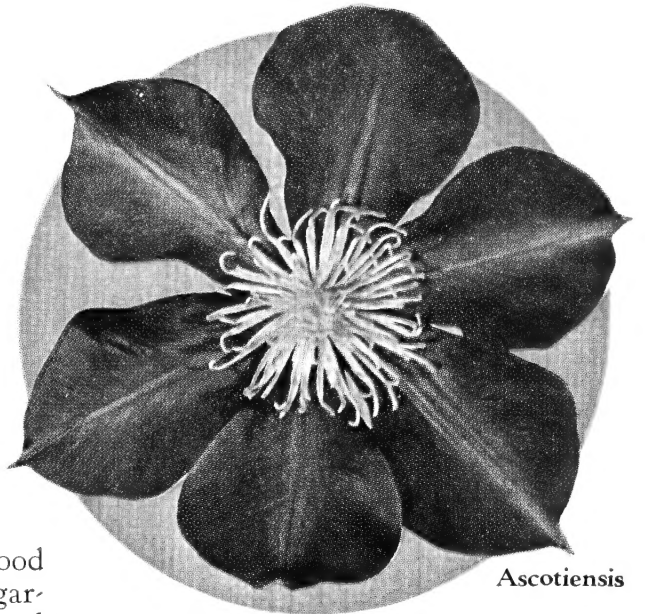
# Clematis

## THE QUEEN OF THE VINES

In A Wonderful Assortment of Pastel and Stronger Colors. Lavender, Purple, Pink, Mauve, Red, White, Yellow, Blue and Multicolor Shades

### Ascotiensis

Azure-blue petals. Tapering buds which assume many interesting forms when unfolding their large, azure-blue petals, producing a star-like form, with a circle center of creamy stamens accentuating the distinctive outline of the flower, serve to characterize this unusual hybrid of the Viticella type. It attains a height of 8 to 10 feet, and its blooming period extends from July to late September. **Each \$1.50**



Ascotiensis

### Belle of Woking

An English hybrid recently introduced in America, it has double flowers that range from pale bluish mauve to silver-gray. Since the flowers are produced on year-old wood, pruning should consist of removing dead wood only. June and July are months of profuse bloom in the garden, and yet this climber attracts attention for its unusual

charm. Eight feet seems to be its limit.

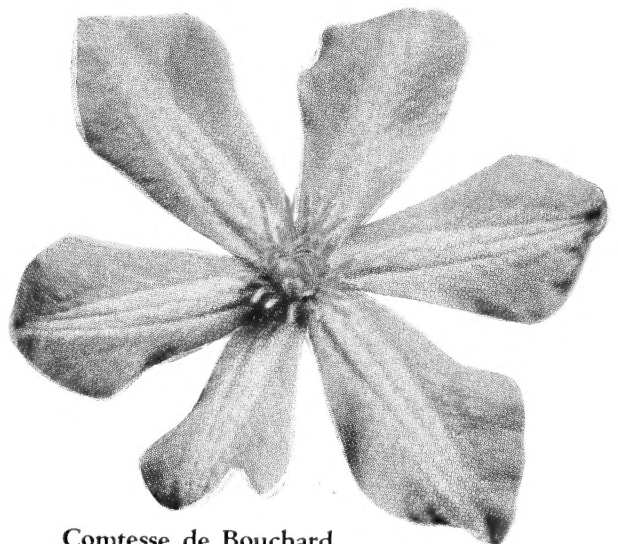
**Each \$1.50**



Crimson Star

### Comtesse de Bouchard

Excellent color. Gracefully curved petals that range in tone from satiny rose to rich pink places this variety in a distinct category. Not only are the flowers the nearest approach to clear pink of all hybrids, but the plant is a strong grower and a profuse bloomer from July to September, and reaches 8 to 10 feet in height. **Each \$1.50**



Comtesse de Bouchard

### Crimson Star

A new variety. The name itself suggests the color, which is vinous red with brownish anthers. In size it is truly spectacular, for it often attains a diameter of 6 to 7 inches. Comparatively new, this showy hybrid (6 to 8 ft.) holds the distinction of having the best red tone yet produced. The blooming period is from June to September.

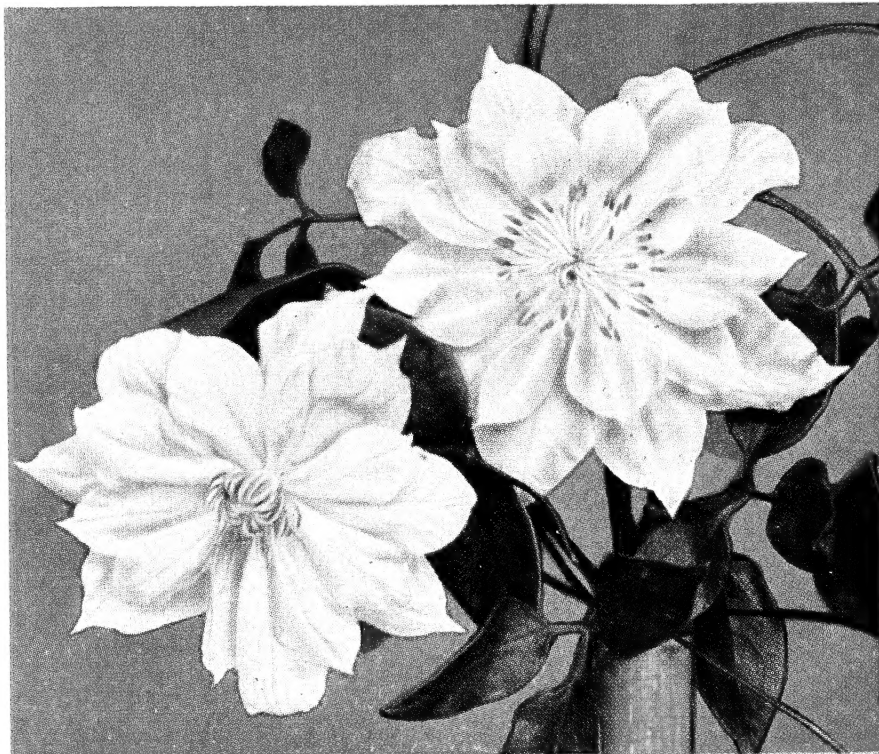
**Each \$1.50**

# Lovely Clematis for the Garden

## Duchess of Edinburgh

Double, pure white, and not unlike a Gardenia, is the description for the flowers of this most desirable plant. White flowers make highlights in the shady garden and help to tone down the brilliant hues in the open border. It is interesting to note that this new introduction blooms on year-old wood, hence pruning should consist of removing only the dead wood in late February or March. The growth-habit of Duchess of Edinburgh suggests its use for pillar treatment.

Each \$1.25



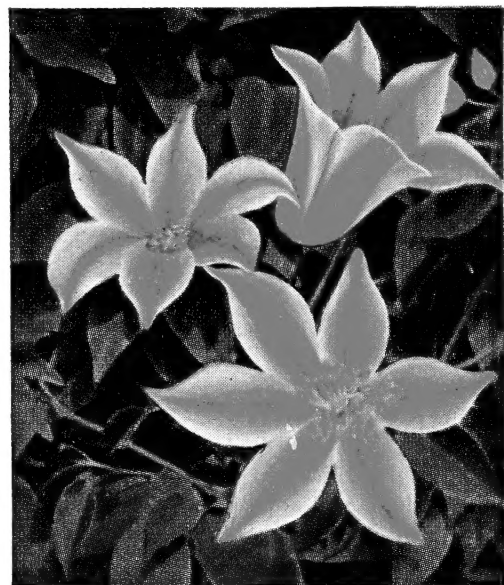
Duchess of Edinburgh

## Duchess of Albany

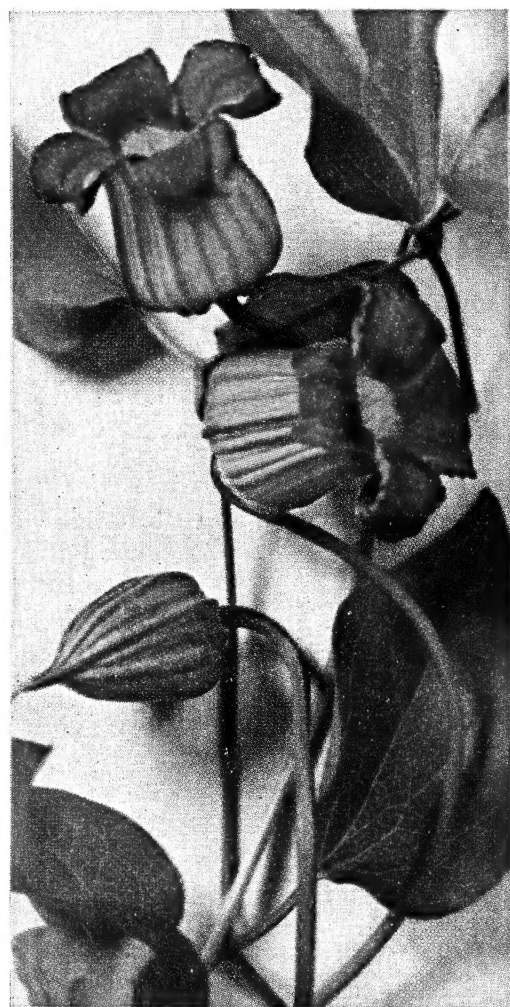
Vigorous sprays of gorgeous pink, trumpet-like flowers

on slender but sturdy stems suggest a grace and a delicacy rarely found among climbing plants. The dark brown center of the flower and the white streaks on the outer side of the petals are interesting features. July to September is the blooming period, and this variety is particularly desirable where it can be seen at close range. Of interest to those who are partial to American plants is the fact that this magnificent hybrid had its origin as a hybrid of Texensis—the Scarlet Clematis of Texas.

Each \$2.00



Duchess of Albany



Crispa

## Crispa

Also known as Marsh or Curly Clematis, it is characterized by graceful foliage and dainty bell or urn-shaped flowers. The color of this species, which is indigenous to the South, has been described as steel-blue, and it has proved hardy in northern New York. While its native habitat is that of a swamp, it thrives well in ordinary loam that has been well limed. These curious, bell-like flowers are in evidence from July to September and the plant can be expected to climb 8 feet on a trellis, or better still, scramble over some early blooming shrub.

Each \$1.00

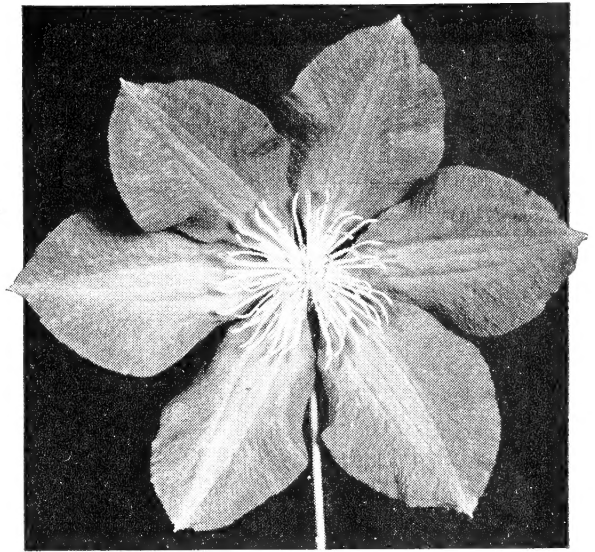
# Excellent for Fences, Pergolas, Trellis and Posts

## Ernest Markham

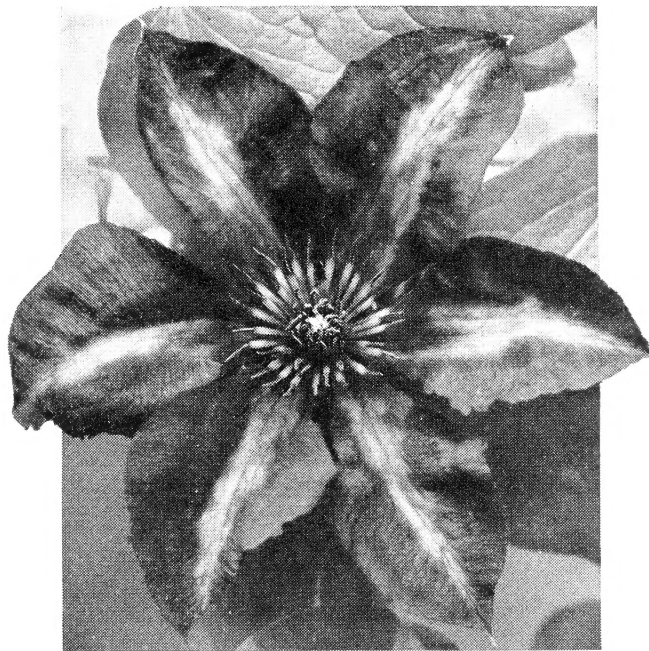
A strong growing Clematis with bloom in mid-summer. The blooms are medium size and very bright red. This variety is new and promises to be the leader in the group of red-flowered Clematis. **Each \$1.50**

## Fairy Queen

Pale flesh-pink to mauve-white bloom of large size with a streak of pink on each petal. Medium height and mid-summer bloomer. **Each \$1.25**



Ernest Markham



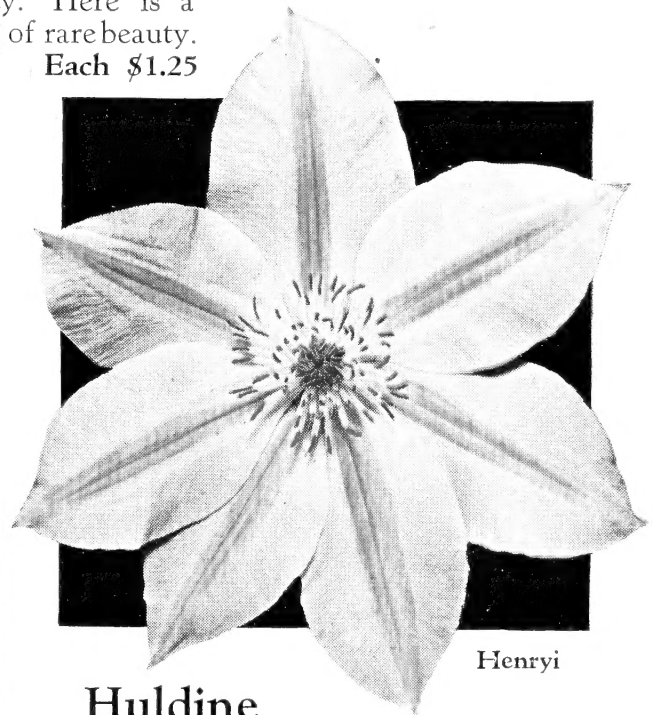
Gipsy Queen

## Gipsy Queen

A hybrid of the well-known Jackmani, Gipsy Queen has velvety violet-purple flowers of a pleasing size. It is typically a summer-blooming variety with all the vigor of its parent, and it should be pruned severely in early spring. **Each \$1.25**

## Henryi

It might well have been called Henryi gigantea for the large white flowers not infrequently measure 8 inches across. Although the growth is vigorous and it climbs to a height of 8 feet, Henryi is outstanding for its quality of bloom rather than its quantity. Here is a hybrid of rare beauty. **Each \$1.25**



Henryi

## Henry Chapin

A fine red Clematis with a medium sized bloom. Profuse blooms in mid-summer on a medium height vine. **Each \$1.50**

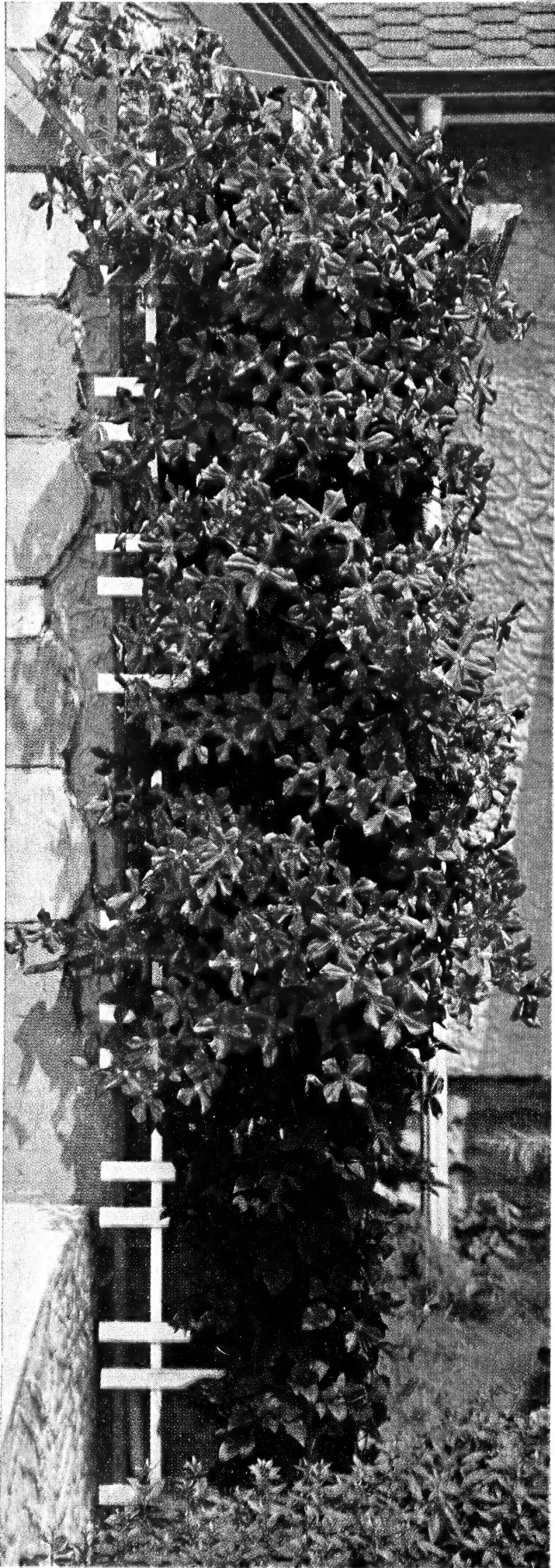


Huldine

## Huldine

One of the newest hybrids from England, Huldine has received recognition from the Royal Horticultural Society. The translucent blooms are pearly white with delicate mauve-pink bars on the reverse side. **Each \$1.25**





Jackmani

# Jackmani

## World Renowned Climbing Clematis

The most popular of all the large-flowering Clematis in America, with large, velvety violet-purple flowers, this variety has long held the popular acclaim which it so richly deserves. Rapid and vigorous in growth, often 10 feet high, it is profuse in bloom through the summer and early autumn. Its beauty and perfection can be retained by cutting back plants to 3 feet in order to encourage strong new wood. **Each \$1.25**

### Jackmani Rubra

A bright red variety of Jackmani, it has all the qualities that make the parent form desirable, including vigorous growth and a free-flowering habit. **Each \$1.50**

### Jackmani Superba

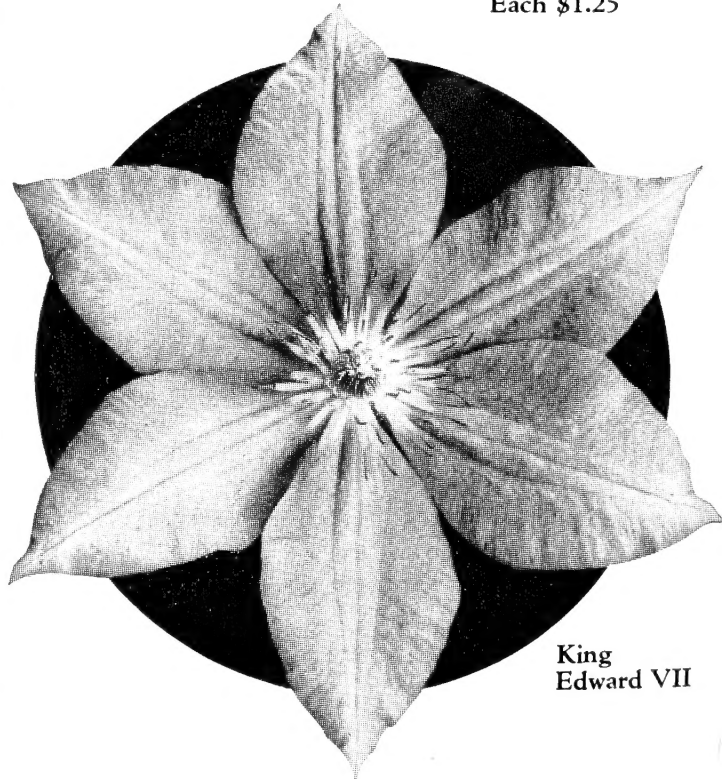
Dark violet-purple and larger than Jackmani, it may well be considered a splendid addition to the large-flowered Clematis because of its rich substance. **Each \$2.00**

### King Edward VII

Crimson bars against a violet background undoubtedly suggested the real name of this variety. The large and distinctive blossoms are produced on 8 to 10-foot vines during the summer and fall months. **Each \$1.50**

### Lady Betty Balfour

*Clematis viticella*, introduced to England from Spain in the sixteenth century, has given us many delightful hybrids, among them Lady Betty Balfour. In early spring it should be cut back half way if one would enjoy the full value of its velvety purple flowers through the summer months. **Each \$1.25**



King  
Edward VII

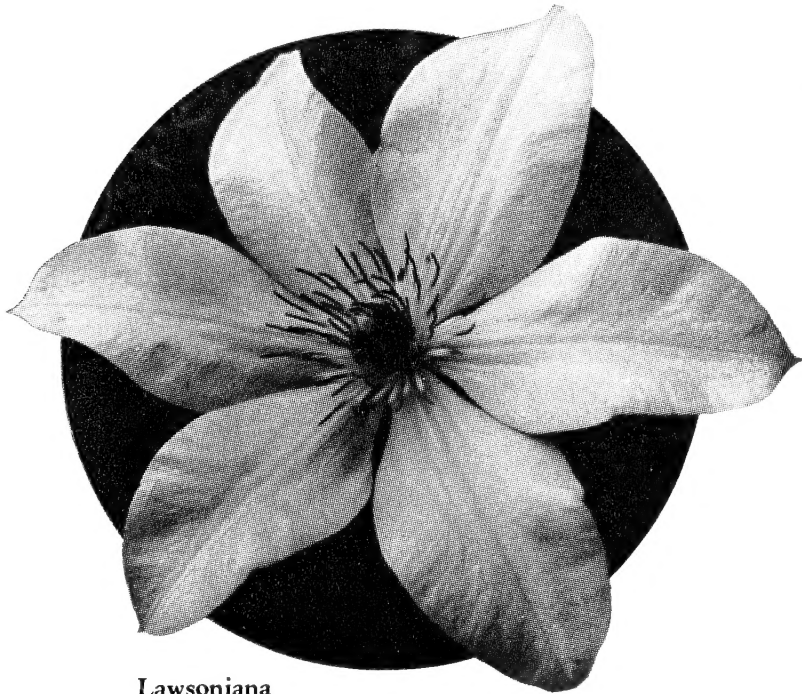


## Lanuginosa Candida

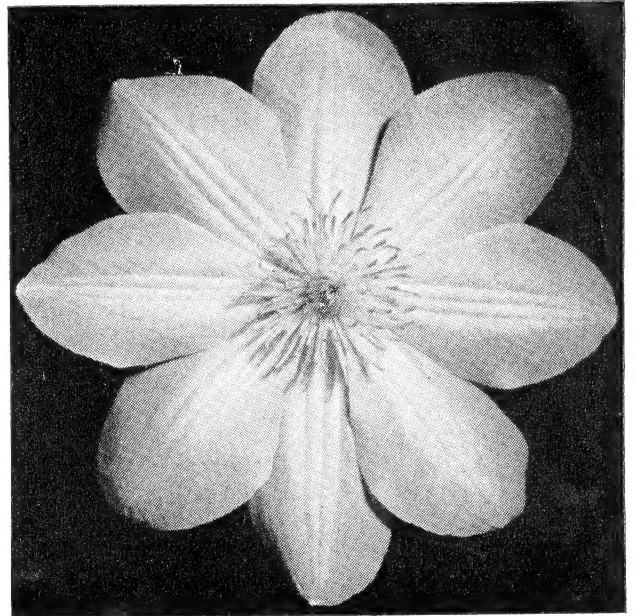
Pure white. A white form of one of the outstanding early-flowering species. Strong grower, 12 to 15 feet. Has green ornamental leaves; makes an excellent cut flower. **Each \$1.25**

## Lasurstern

A fine deep blue flower of a very large size makes this variety very distinctive. What it lacks in quantity of bloom, it certainly more than makes up for in size and quality of flower. **Each \$1.50**



Lawsoniana



Lanuginosa Candida

## Lawsoniana

Another blue Clematis, but this one is flushed with mauve and is most attractive. Large flowers with overlapping petals, a long blooming season (June to September), and a strong, rich growth make it a striking feature in the landscape. **Each \$1.50**

## Lord Neville

With petals rich in texture, like plum-colored velvet, Lord Neville will add a note of luxury and atmosphere to any garden. Where average height and long blooming season are desired, together with flowers unusual in outline and exquisite in color, this extraordinary plant will meet the requirements. **Each \$1.25**

## Mme. Baron Veillard

If pastel tones are desired, the warm lilac-rose flowers of this French introduction will undoubtedly meet with approval. As the days get cooler, the color of the blooms becomes more intense, and its growth is checked only by frost. Then, too, it is tall growing (10 to 12 ft.), sturdy of growth, and very profuse in bloom. The flowers are moderate in size, borne in generous clusters, and of unusually delicate beauty. From all accounts, Mme. Baron Veillard is destined to become very popular. **Each \$1.25**

## Montana Alba

Known as the Great Indian Clematis, this species from the Himalaya Mountains is a plant of remarkable vigor. The whitish flowers, with showy yellow stamens, change to pink with age. **Each \$1.25**



Mme. Baron Veillard



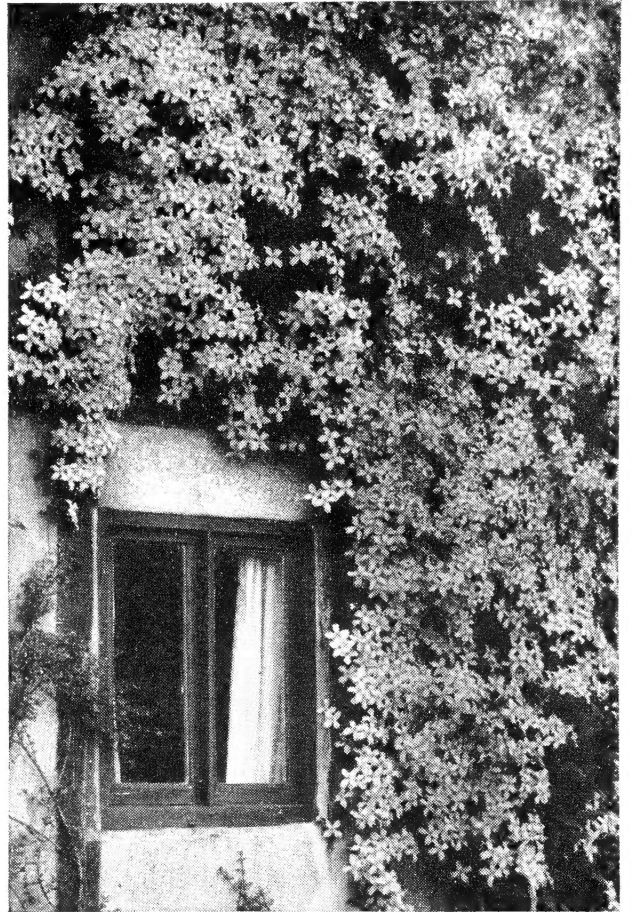
Montana  
Undulata

## Montana Undulata

Similar to Montana rubens in its general characteristics, this variety is distinguished by its soft mauve-pink flowers. A setting of stone, preferably a wall or a terrace, will do much to bring out the beauty of this Asiatic treasure. Each \$1.25

## Montana Rubens

"China, the mother of gardens," gave us this early blooming variety with its rosy red flowers, 1 to 2 inches across, which change to a deep, clear pink as they expand. Here is a plant, too, for the garden in late May and June. It will enhance the beauty of any window, and seems particularly adapted for growing on walls, since it grows 10 to 15 feet tall. Since it blooms on year-old wood, pruning should consist of the removal of dead wood only. Each \$1.25



Montana Rubens

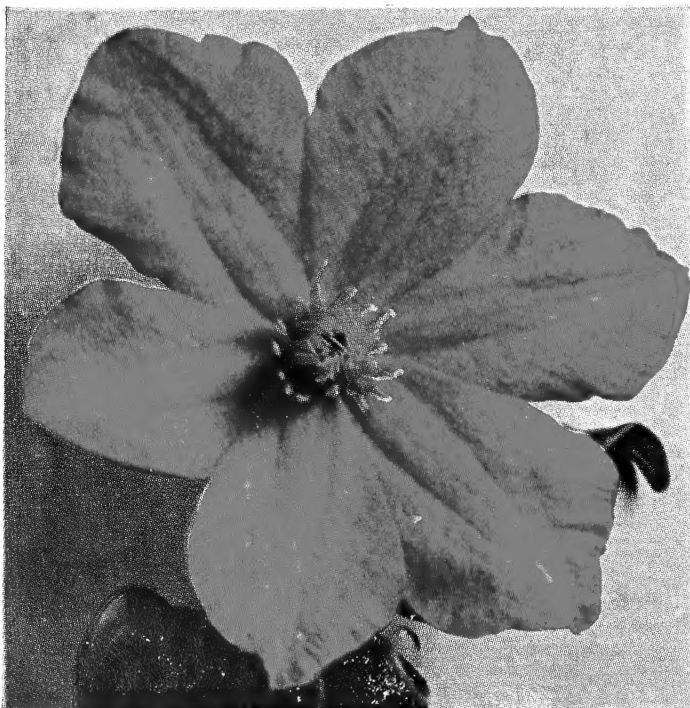
MRS. CHOLMONDELEY. See back cover.

## Mme. Edouard Andre

Another red Clematis, but this one has a purplish cast, the flowers are smaller, and the petals are more rounded than those of Jackmani rubra and Crimson King. Perhaps more modest in its rapidity of growth (7 feet), it excels, however, in a profusion of bloom. A cluster of these flowers suggests the richness and texture of an old Persian rug. Each \$1.25

### WINTER MULCH

When cold weather arrives, soil should be pulled up around the Clematis and straw, peat or loose leaves added to prevent winter injury from freezing and thawing. Small pieces of screen will prevent mice or rabbits from eating Clematis tops in the winter.



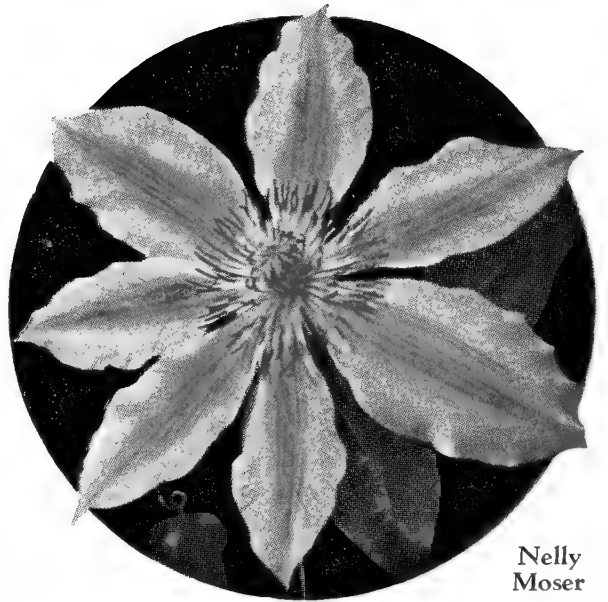
Mme. Edouard Andre

# Clematis - Quick Growing

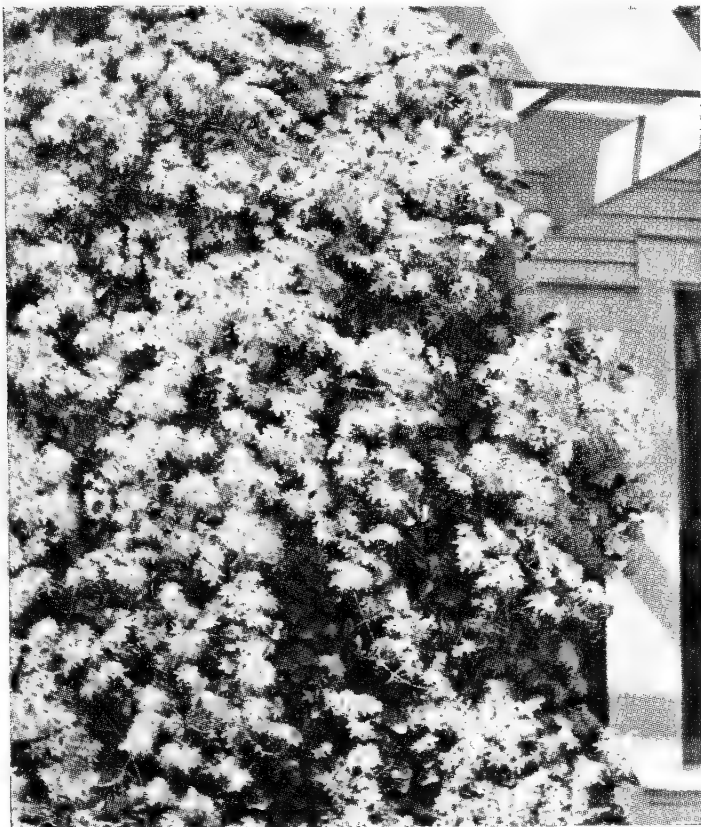
## Nelly Moser

Among the many excellent hybrids of *Clematis lanuginosa*, the so-called "Woolly-leaved Clematis," is Nelly Moser. Red bars accentuate the pale mauve and white petals. Truly an unusual flower, profuse in its bloom and vigorous in its growth (10 to 12 feet), this variety will bring new interest to the summer garden.

Each \$1.50



Nelly Moser

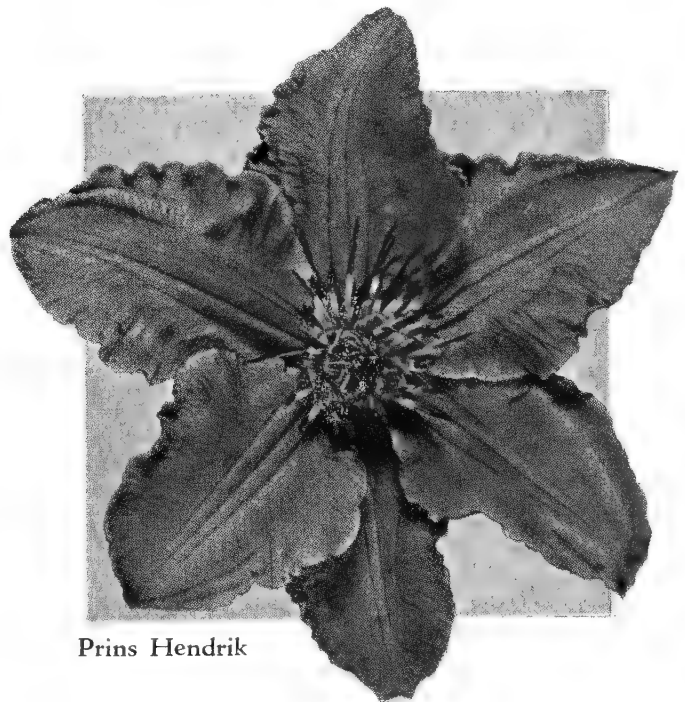


Paniculata

## Paniculata

Familiar and desirable, this plant, with its panicles of fragrant white flowers, needs no descriptive comment except to emphasize the fact that it has many uses and is very reliable.

Each \$1.00



Prins Hendrik

## New Seedling

*Can You Name It?*

### Seedling XXXI

This variety is yet unnamed but it promises to be one of the most popular. The flowers are medium size and are mauve-white with a bright red bar on the petals. It is a mid-summer bloomer with a medium sized vine and seems to adapt itself to a cedar post and completely cover it.

Each \$1.50

## Prins Hendrik

There is something indescribably beautiful about blue flowers. Prins Hendrik is azure-blue, with ruffled petals often 7 inches or more in diameter. Indeed, the flowers suggest the beauty of rare orchids. It is desirable for conservatory treatment as well as for outdoor use, and in either case, the flowers last well when cut. Since it reaches a height of about 7 feet, it can be cared for easily in a conservatory and can be trained for a desired effect.

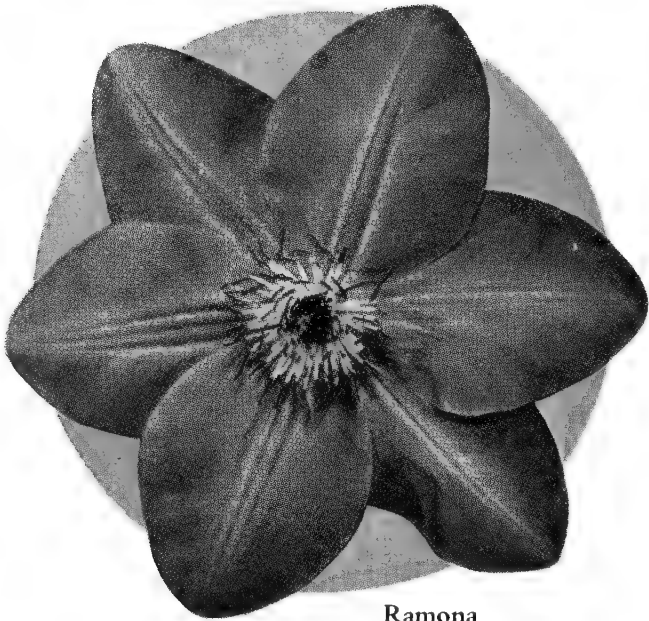
Each \$2.00



# Ramona

Probably so named because it suggested something of the beauty of the Indian maiden, this lavender-blue Clematis is accentuated by a disc of darker anthers. Short, pointed buds, rounded petals which make a full flower, and the vigorous growth are the distinguishing marks of this exceptional variety which is a fine bloomer during the summer months.

Each \$1.25



Ramona

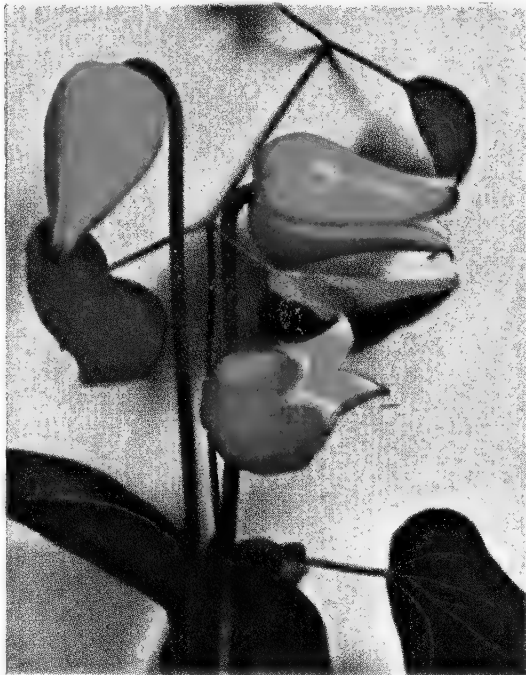
## Tangutica Obtusiuscula

Yellow bells, like Japanese lanterns, on stately stems, or modest Chinese lanterns--describe them as you will, these flowers are golden yellow, dainty and unusual. In late June come the first flowers, and the blooming carries through until September. Clambering over a rock, *Tangutica obtusiuscula*, the best of the yellow Clematis, seems to grow well.

Each \$1.00



Tangutica Obtusiuscula



Texensis

## Texensis

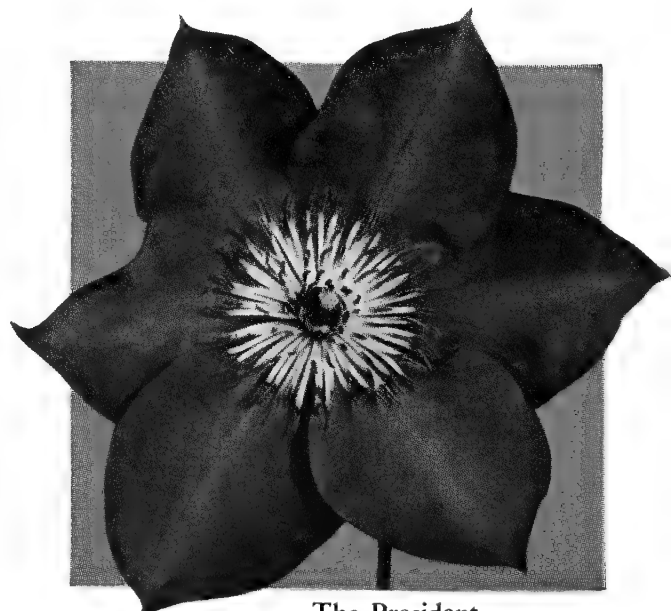
Texas may well be proud of this species which has its natural habitat in that great state. Indeed, the curious urn-shaped flowers of reddish rose, softened on the inner side with buff and pinkish buff tones, make this plant, often listed *Coccinea*, unique. The long-haired seed clusters are truly fascinating. Plant this species near a fence, or let it ramble over a stone wall, and it will soon take on a character all its own. It is well to know that this plant is herbaceous in our climate, and sends up entirely new growth each year.

Each \$1.00

## The President

White trellises embellished with the reddish plum-violet blossoms of *The President* will give to the summer garden that richness which the dark-flowered climbing Roses provide in June. It has proved to be a thrifty variety, producing its blooms freely the entire length of its 10-foot vines. This plant will appeal to the discriminating gardener.

Each \$1.50



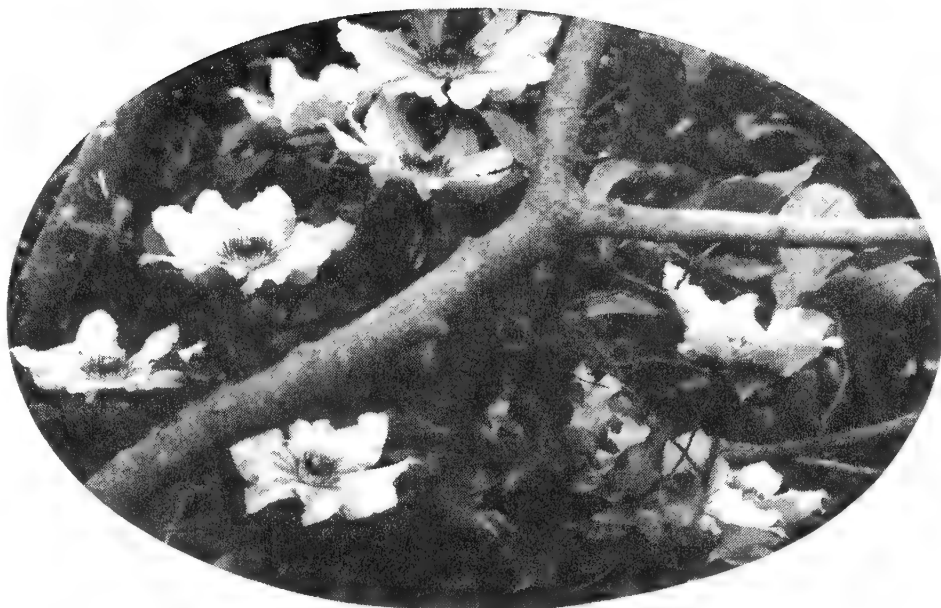
The President



## William Kennett

The coolness of deep lavender is a welcome adjunct to any garden, and it is all the more effective when the flowers are unusual in character. In addition to having a long blooming period (June to September), William Kennett is a sturdy grower, and produces flowers of exceptional size.

Each \$1.50

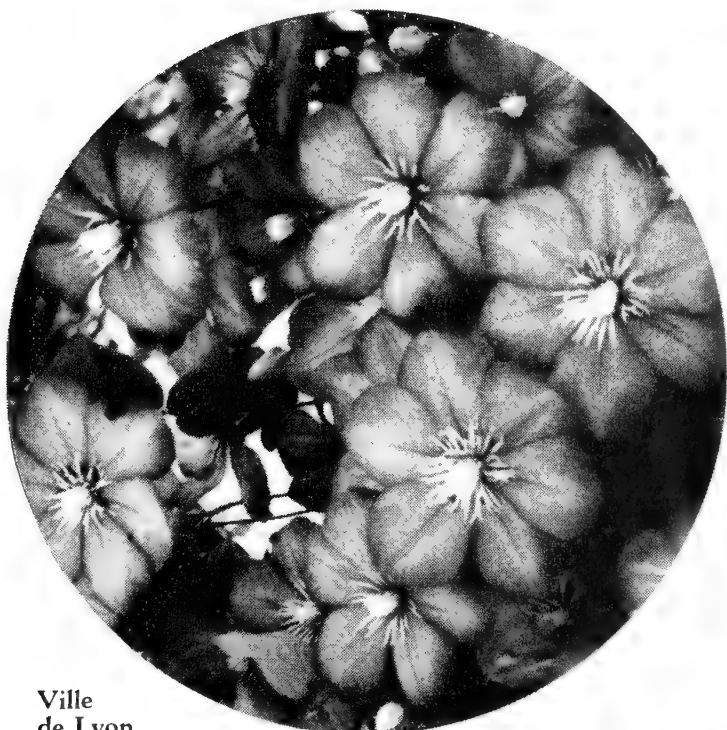


William Kennett

## Ville de Lyon

This Clematis produces an abundance of carmine-red flowers which are all the more striking because of the darker tones in the center of each blossom. From July until September it clammers to a height of 8 to 10 feet.

Each \$1.25



Ville  
de Lyon

## W. E. Gladstone

A large lilac-colored bloom with a light center.

Each \$1.25

### SUMMER MULCH

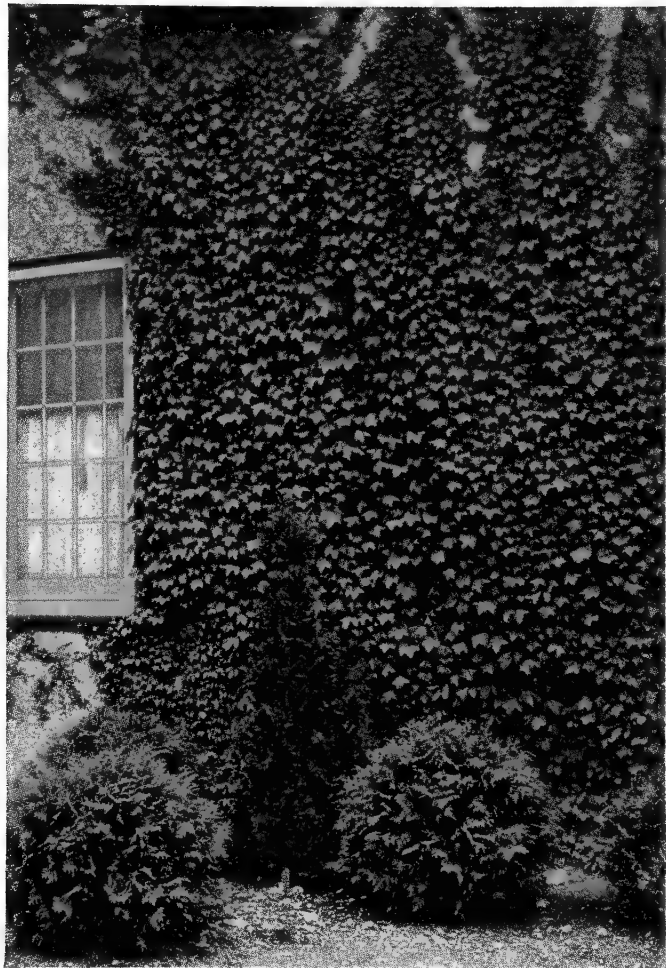
A cool, moist root run is all important in growing Clematis. A mulch 2 inches deep and in a 2-foot circle around each plant made up of three-fourths peat moss and one-fourth Driconure feeds them when it rains and keeps the soil cool and moist. This may be worked into the soil once during the summer and replaced. We like to plant Clematis on a cedar post in full sun with this mulch on the soil.



W. E. Gladstone

# Other Ornamental Vines

Many Garden Lovers Enjoy the Familiar Vines of Yesteryear



Ampelopsis Veitchi

## Ampelopsis Lowi

Where a very attractive vine is needed for a low wall or on a bird bath, this makes an excellent vine. Each 75c

## Ampelopsis Quinquefolia

Virginia Creeper. This vine, more correctly known as Parthenocissus, is one of our most vigorous native climbers. While it adapts itself readily to trellises and arbors, it is often found clambering over stone walls. Each autumn season its foliage is clothed in shades of gold and scarlet. Each 50c

## Ampelopsis Veitchi

Boston Ivy. Almost too well known to need description, this vigorous climber seems to thrive even under smoky city conditions, making a rich mass of dark green foliage. Its ability to cling to almost any surface and its rich autumn color are among its desirable qualities. Each \$1.00

## Aristolochia Sipho

Dutchman's Pipe. The curious brownish pipe-shaped flowers are a delight to children and the large heart-shaped leaves make a dense screen. Few vines are better adapted to porches or pergolas. Each \$1.50

## Bignonia Radicans

Trumpet Vine. Luxuriant foliage and brilliant clusters of orange-scarlet flowers make this American vine a worthy adjunct to any garden. It may be trained on old tree stumps or on trellises, or it may be allowed to grow wild. Each 50c

## Bignonia, Mm. Galen

Large clusters of orange-red flowers make this a very showy vine. A good strong growing vine. Each \$1.00

## Celastrus Scandens

American Bittersweet. Here is a vigorous climbing plant that will grow readily in partial shade. To prevent it from becoming too rampant, it should be pruned frequently. The familiar autumn fruits are always useful for indoor decoration. Each 50c

## Euonymus Radicans Vegetus

Thick lustrous, dark green evergreen leaves and orange colored berries. Will grow 18 to 20 feet on brick, stone or stucco. Each \$1.00

## Hedera Helix

Large-leaf English Ivy. Few plants are richer in texture or of more enduring beauty than the English Ivy. It may be used effectively on brick or stone walls or treated as a ground cover. Each 50c



Euonymus Vegetus



# JAMES I. GEORGE & SON, Fairport, N. Y.

Please do not write here

Date \_\_\_\_\_

Your Name \_\_\_\_\_

Very Plain

Street No. \_\_\_\_\_

City and State \_\_\_\_\_

Forwarded by \_\_\_\_\_

Mail, Express or Freight

Amount Enclosed \_\_\_\_\_ Cash, \$ \_\_\_\_\_ Money Order, \$ \_\_\_\_\_ Draft or Check, \$ \_\_\_\_\_

State how much money you enclose

QUANTITY	NAME OF ARTICLE	Dollars	Cents
	Clematis No. 1, grown on own roots, postpaid in U.S.A. at the proper planting time		
	<del>\$6.00 WORTH OF CLEMATIS \$5.00; \$12.00 WORTH FOR \$10.00</del>		
	Postpaid in U.S.A.		
	Ascotiensis	Each \$1.50	
	Belle of Woking	1.50	
	Comtesse de Bouchard	1.50	
	Crimson Star	1.50	
	Crispa	1.00	
	Duchess of Albany	2.00	
	Duchess of Edinburgh	1.25	
	Ernest Markham	1.50	
	Fairy Queen	1.25	
	Gipsy Queen	1.25	
	Henryi	1.25	
	Henry Chapin	1.50	
	Huldine	1.25	
	Jackmani	1.25	
	Jackmani rubra	1.50	
	Jackmani superba	2.00	
	King Edward VII	1.50	
	Lady Betty Balfour	1.25	
	Lanuginosa candida	1.25	
	Lasurstern	1.50	
	Lawsoniana	1.50	
	Lord Neville	1.25	
	Mme. Baron Veillard	1.25	
	Mme. Edouard Andre	1.25	
	Montana alba	1.25	
	Montana rubens	1.25	
	Montana superba	1.25	
	Montana undulata	1.25	
	Mrs. Cholmondeley	1.25	

CUT ALONG DOTTED LINE

In making your order, please give the price, to avoid delays and errors

QUANTITY	NAME OF ARTICLE	Dollars	Cents
	Clematis No. 1, grown on own roots, postpaid in U.S.A. at the proper planting time		
	Nelly Moser	Each \$1.50	
	Paniculata	1.00	
	Prins Hendrik	2.00	
	Ramona	1.25	
	Seedling XXXI	1.50	
	Tangutica obtusiuscula	1.00	
	Texensis	1.00	
	The President	1.50	
	Ville de Lvon	1.25	
	W. E. Gladstone	1.25	
	Wm. Kennett	1.25	
	Vines postpaid if included with an order for Clematis Otherwise they will be sent express collect, unless order totals \$5.00 or more		
	VINES		
	Ampelopsis Lowi	Each \$0.75	
	Ampelopsis quinquefolia	.50	
	Ampelopsis veitchi	1.00	
	Aristolochia siphon	1.50	
	Bignonia radicans	.50	
	Bignonia, Mme. Galen	1.00	
	Celastrus scandens	.50	
	Euonymus radicans vegetus	1.00	
	English Ivy, large leaf	.50	
	Hydrangea petiolaris	1.75	
	Lonicera, Hall's Japanese	.50	
	Lonicera Heckrotti	1.00	
	Lonicera Henryi	1.00	
	Lonicera sempervirens	.50	
	Lonicera Tellmanniana	1.00	
	Polygonum Auberti	1.00	
	Wisteria, purple	1.00	
	Wisteria, pink	1.00	
	Wisteria, white	1.00	

In making your order, please give the price, to avoid delays and errors



# Ornamental Vines — Continued

## Hydrangea Petiolaris

Climbing Hydrangea it is commonly called and will cling to brick or masonry, reaching a maximum height of twenty to thirty feet. It makes a beautiful display of white flowers. It is a slow grower. **Each \$1.75**

## Lonicera Japonica Halliana

Hall's Japan Honeysuckle. Delightfully fragrant, free-flowering, and vigorous growing, this vine is commonly used where dense screening effects are needed or as a ground cover. The almost evergreen character of the foliage gives this familiar plant added distinction. **Each 50c**

## Lonicera Heckrotti

Everblooming Honeysuckle. A superb ground cover with glaucous foliage and delightful two-tone blossoms which are warm purple outside and bright yellow inside. As its common name suggests, it blooms freely through the summer and may be grown on trellises where a climber of moderate height is desired. **Each \$1.00**

## Lonicera Henryi

Yellowish flowers and black fruit. Evergreen foliage with long pointed leaves which are very ornamental. A strong growing Honeysuckle which will grow in partial shade. **Each \$1.00**

## Lonicera Sempervirens

Scarlet Trumpet Honeysuckle. Although this species has no distinctive fragrance, it is notable for its clusters of tubular scarlet blossoms and its brilliant red fruits. **Each 50c**

## Lonicera Tellmanniana

Golden Giant Honeysuckle. This desirable hybrid with its rich yellow blooms, shaded bronzy red, is free flowering and vigorous in its growth. **Each \$1.00**

## Polygonum Auberti

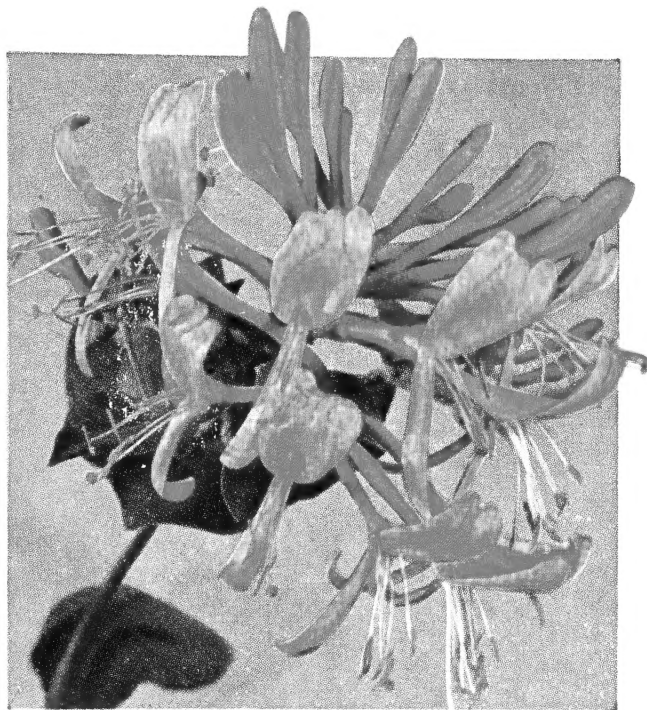
Silver Lace Vine. For immediate screening effects the Silver Lace Vine is invaluable. It is a rampant grower and blooms over a long period. Plant it on a cedar post or a trellis for accent effects. **Each \$1.00**

## Wisteria, Purple

Grafted plants are offered since they mature and bloom sooner than do plants raised from seed. A well-placed specimen of Wisteria is a permanent investment in any garden, since it increases in beauty with the years. **Each \$1.00**



Polygonum Auberti



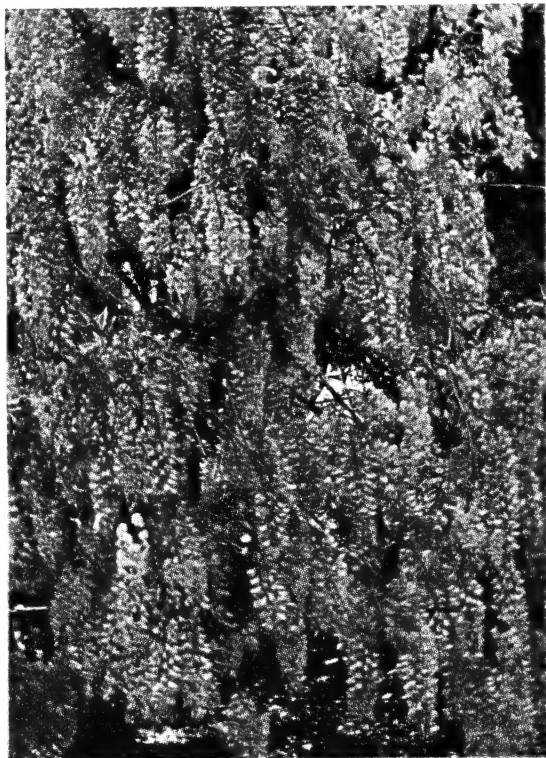
Lonicera Heckrotti

## Wisteria, Pink

A choice variety of Wisteria with delicate pink flowers. **Each \$1.00**

## Wisteria, White

A white form of Wisteria which is very attractive. **Each \$1.00**



Purple Wisteria

# Mrs. Cholmondeley

A Delightful  
Climbing

Clematis



Wisteria-blue is featured by this lady with the long name, and the color, we think, is far more remarkable than the designated name. Rare delicacy of color and large, open flowers, borne in profusion, are desirable qualities for summer-flowering vines, and it is extraordinary to find such an unusual tone of blue in this group of plants.

Each \$1.25

Sec 34.66, P. L. & R.  
U. S. POSTAGE  
**PAID**  
FAIRPORT, N. Y.  
Permit No. 30

*Department of Agriculture*

*Washington 25*

*D. C.*